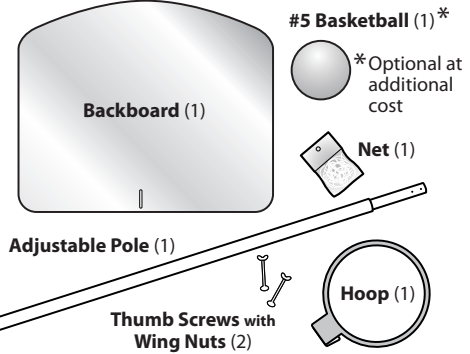
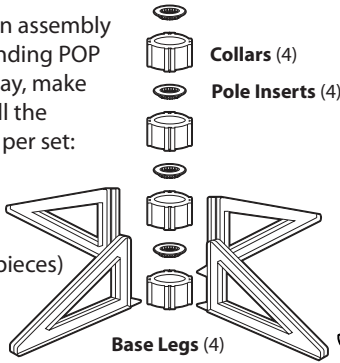


POP Basketball Display Assembly Instructions

Before you begin assembly of your free-standing POP Basketball Display, make sure you have all the following items per set:

Base
(consists of 12 pieces)



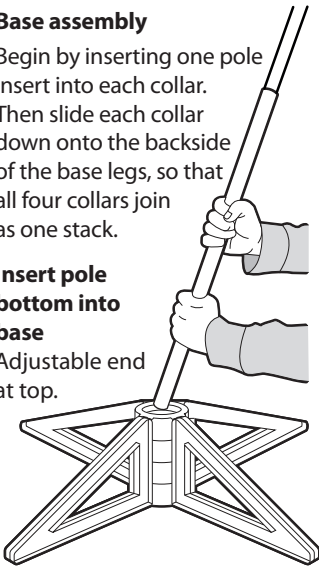
#339 Acrylic backboard only: Make sure to peel off the blue protective film before assembling.

1 Base assembly

Begin by inserting one pole insert into each collar. Then slide each collar down onto the backside of the base legs, so that all four collars join as one stack.

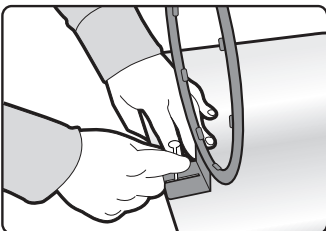
2 Insert pole bottom into base

Adjustable end at top.



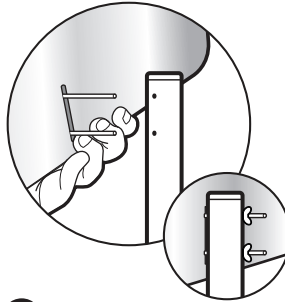
3 Attach hoop

Lay the backboard down (facing up) and align the hoop vertical slot directly over the vertical slot on the backboard. Partially insert the two thumb screws approximately 1.25" apart.



4 Attach backboard

Carefully holding hoop and backboard together, gently push the thumb screws through the pre-drilled holes near the top of the pole - out to the other side.



5 Fasten in place

Screw on wing nuts to hold into place.

NOTE: Be careful NOT to over tighten as doing so may damage backboard!

6 Attach netting

Attach net to inside of rim by looping nylon over hubs.

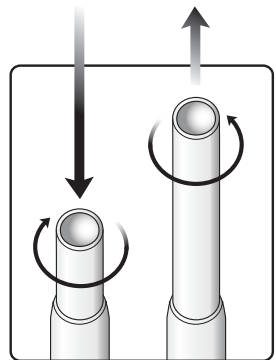


Pull down on nylon so that it locks behind hubs.



7 Adjustable Pole

POP Basketball Display height can be adjusted by turning the upper half of the adjustable pole either clockwise to shorten, or counter-clockwise to lengthen.



This POP Basketball Set is meant for display purposes. Not intended for game play.

Visit our website at
www.sportproducts.com